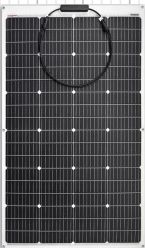


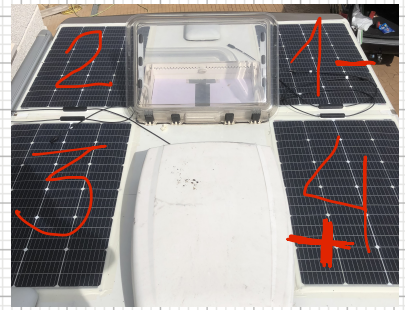
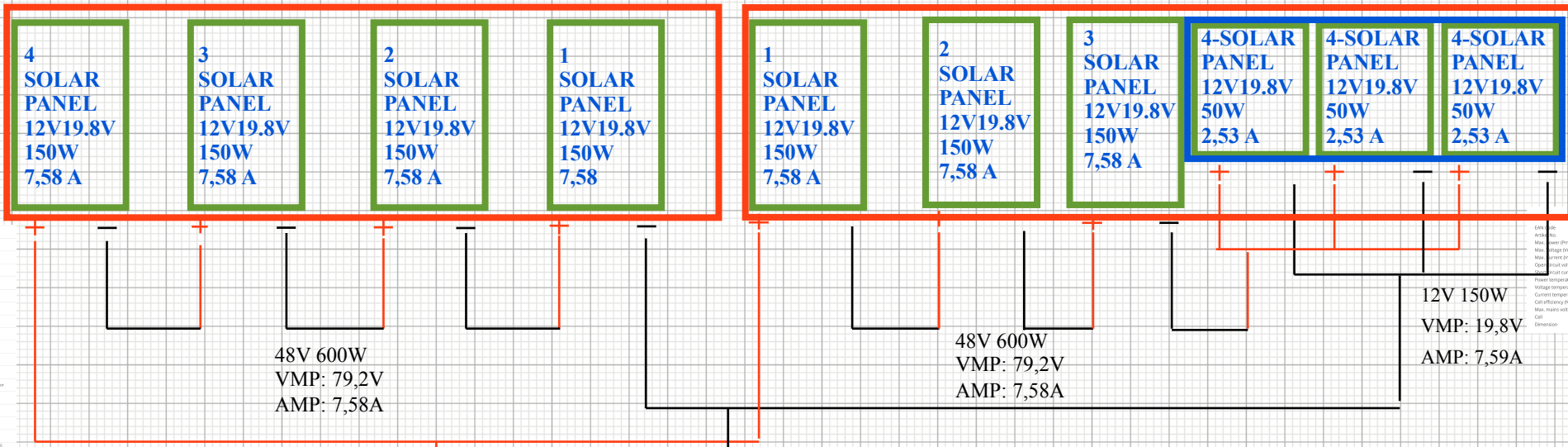
# STRING 1

# STRING 2



Max. power (Pmax)	150W
Max. voltage (Vmp)	19,8V
Max. current (Imp)	7,58A
Open circuit voltage (Voc)	23,4V
Short circuit current (Isc)	8,02A
Operating temperature	-40~85°C
Max. system voltage	600VDC/1000V
Cell efficiency	22,82%
Power tolerance	0~+5%
Cell type	Monocrystalline Silicon
Cells	72 (6x12)
Junction box	IP67
Connector solar cable	900mm, 4mm <sup>2</sup> solar cable with MC4 connector
Production date	2023
Warranty (years)	2 (5000000h)
Dimensions (mm)	1110 x 710 x 30
Weight (kg)	3,41

Ecot Line	Ecot Line
ESS3M25	ESS3M25
42000000252404-02000000114	
Part No.	1610000
Part No.	3000
Max. Power (W)	250
Max. Voltage (V)	150
Max. Current (A)	2,53
Open Circuit Voltage (Voc)	23,5
Short Circuit Current (Isc)	2,53
Power Temperature Coefficient	0,45%/°C
Voltage Temperature Coefficient	-0,33%/°C
Current Temperature Coefficient	-0,33%/°C
Cell Efficiency (%)	20,6%
Max. System Voltage	1000VDC/1500V
Cell	60(12)
Dimension	850x350x40mm 810000040mm



48V 1200W  
VMP: 79,2V  
AMP: 15,16A

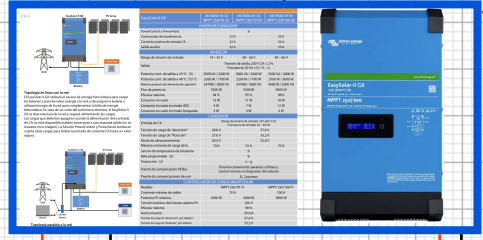
GEN AUTO START



GENERATOR AC

MAIN AC

ALTERNATOR DC



Elektroblock EBL 630



LIFEPO4 Battery 7 KWH



WB 12V 90AH

WB 12V 90AH

SB 12V 104 AH AGM

