

MultiPlus	
Freq. Out	49.9 Hz
UOut	230 V
IOut	0.2 A
Freq. In	50.1 Hz
UMains	235 V
IMains	0.0 A
Udc	13.1 V
Udc ripple	0.1 V
Idc	-3 A
Ignore AC aux. relay	0

VE Configure 3 (MultiPlus 12/2000/90-30 S/PE HQ2012MNBVY)

File Port selection Target Defaults Options Special Help

MultiPlus

Freq. Out	49.9 Hz
UOut	230 V
IOut	0.1 A
Freq. In	50.1 Hz
UMains	233 V
IMains	0.0 A
Udc	13.1 V
Udc ripple	0.1 V
Idc	-2 A
Ignore AC aux. relay	0

show VE Bus monitor

Get settings

Send settings

General

System frequency: 50Hz

Shore load

AC input current limit: 7.0 A Overruled by reverse

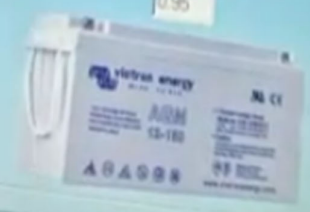
Dynamic current limiter

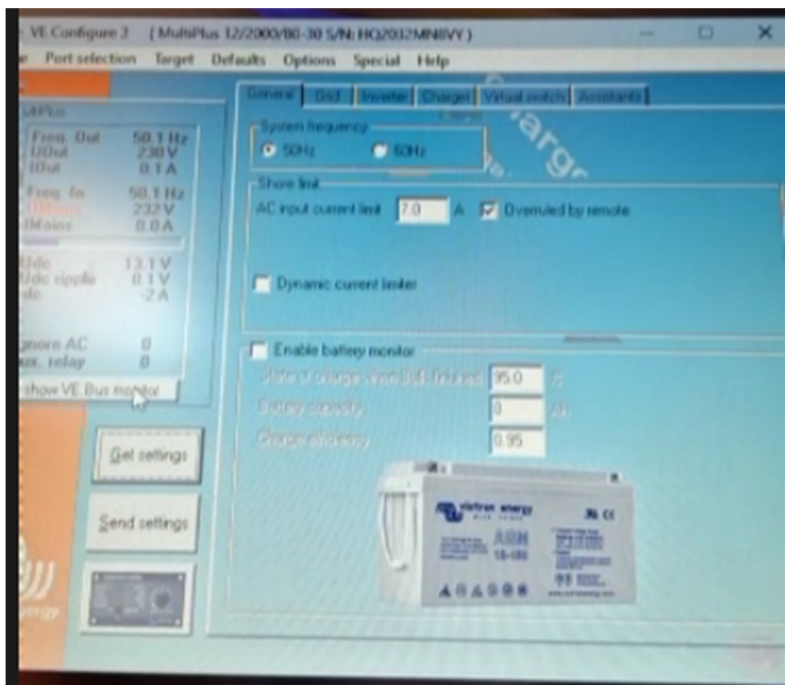
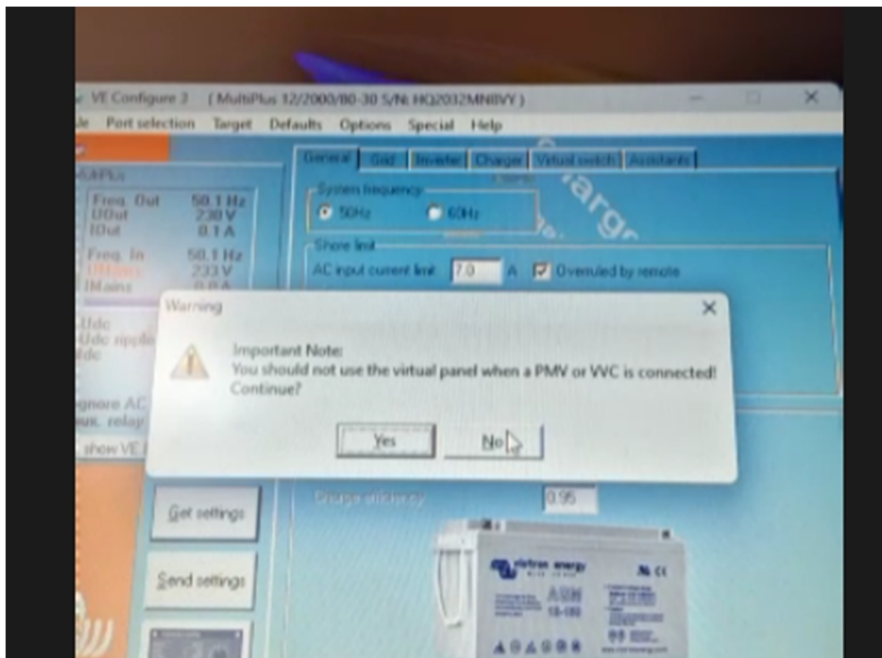
Enable battery monitor

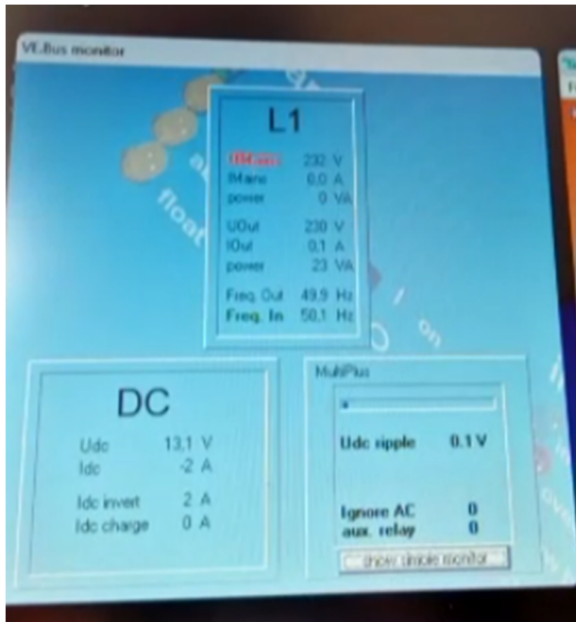
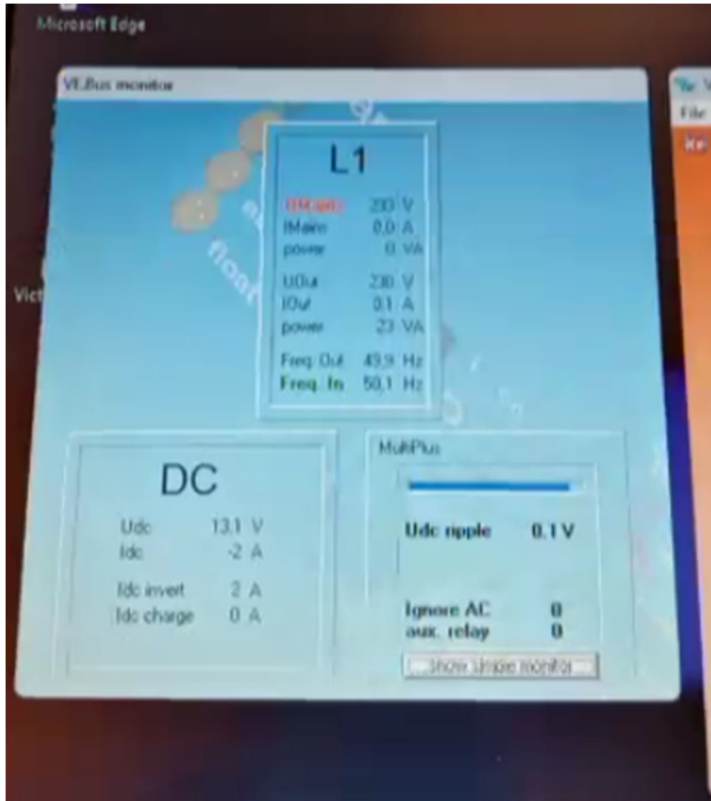
State of charge when full: 35.0 %

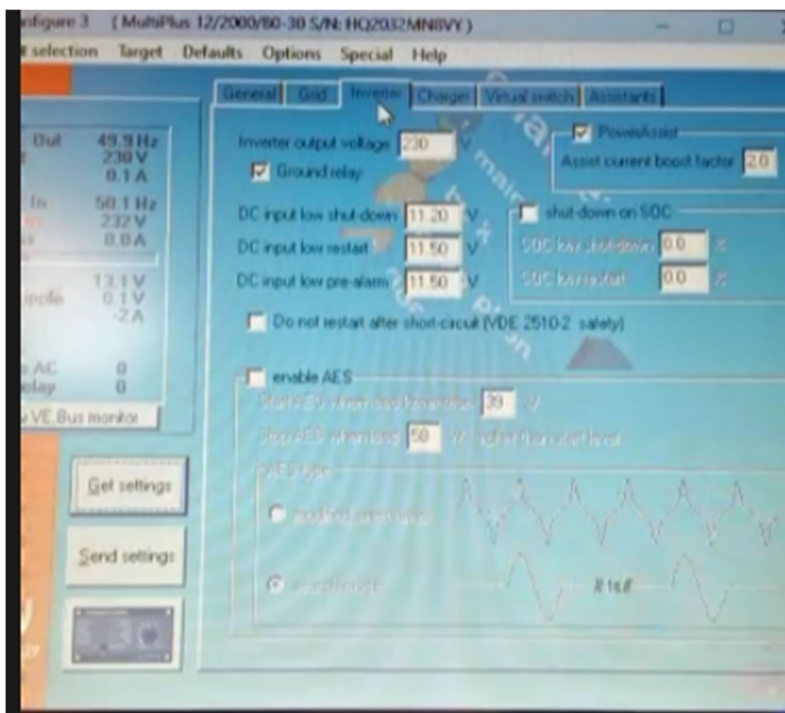
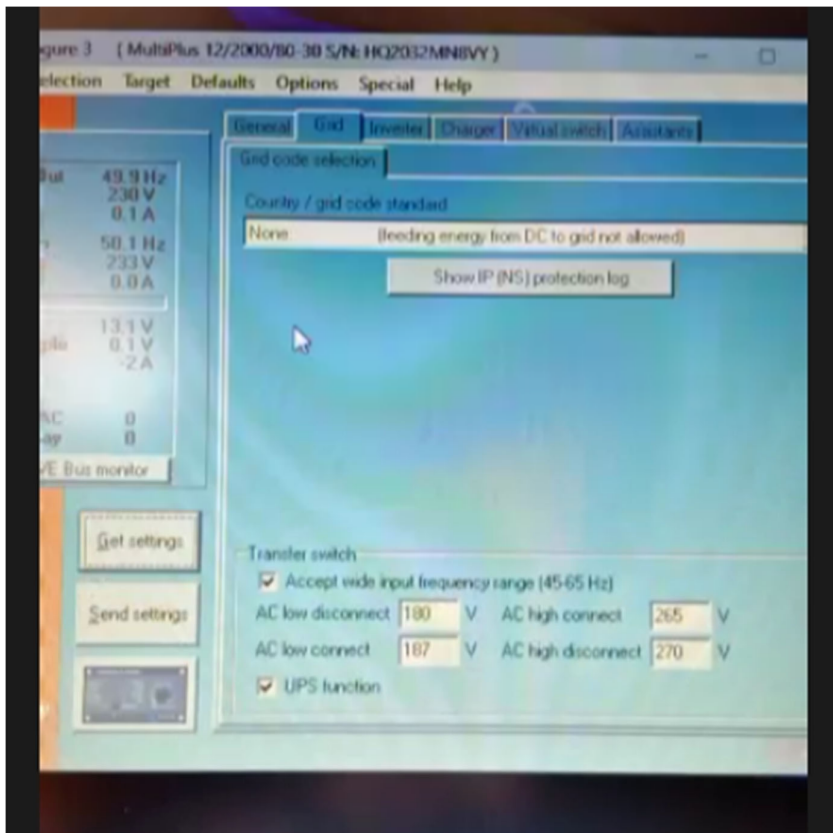
Battery capacity: 0 Ah

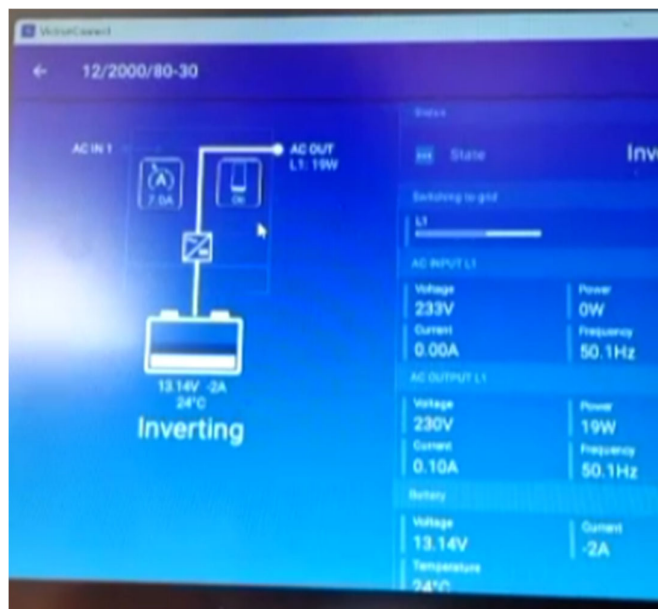
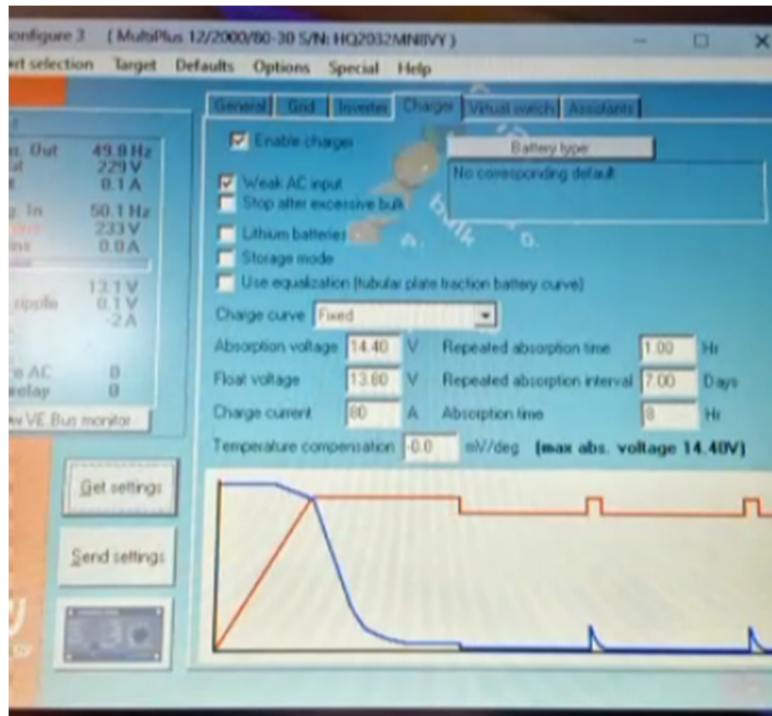
Charge efficiency: 0.95

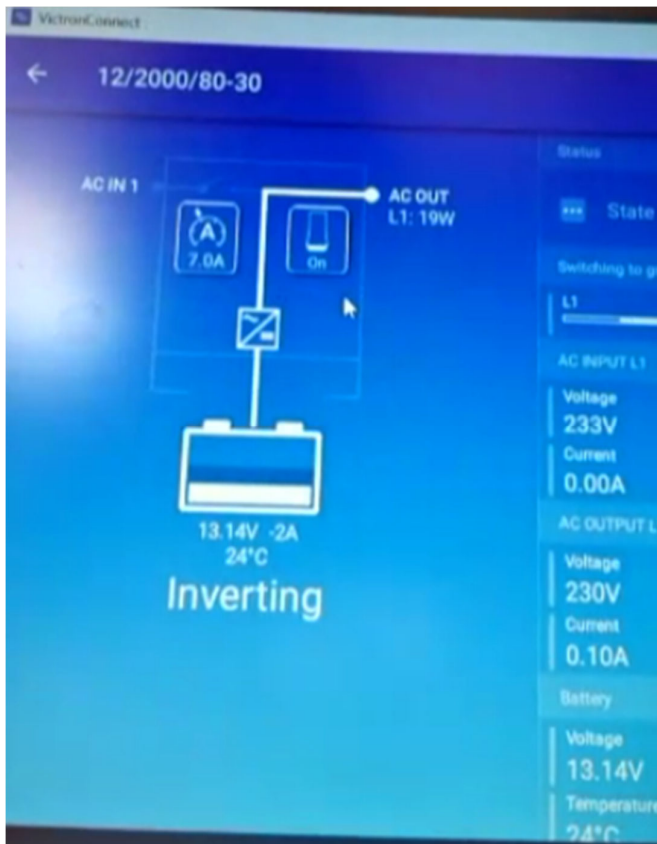


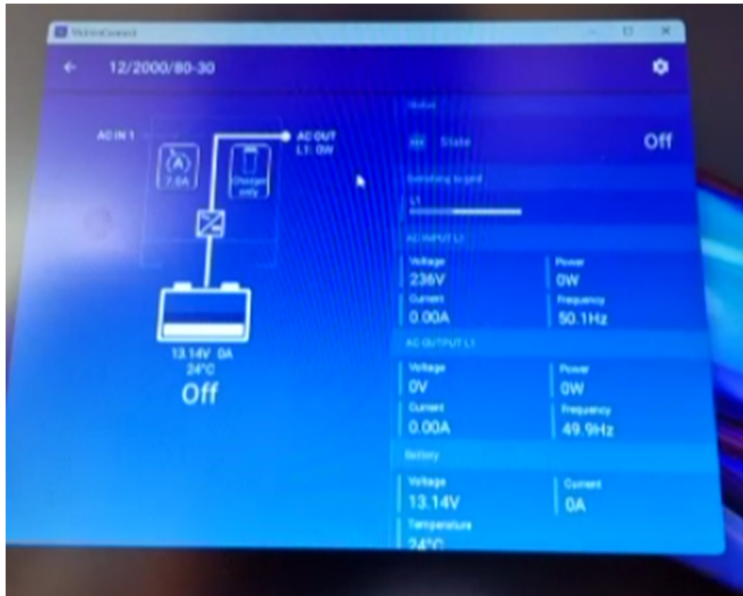


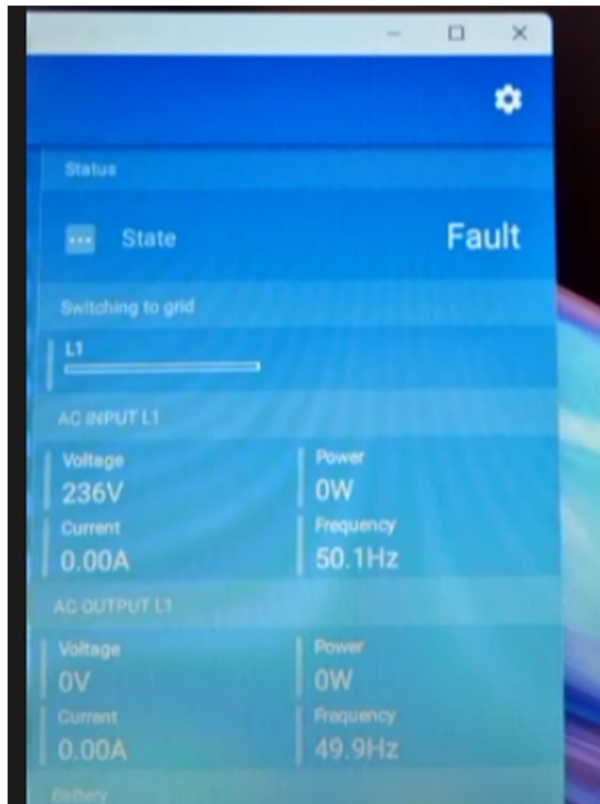












M2P32	
Freq. Out	45.9 Hz
UOut	230 V
IOut	0.2 A
Freq. In	50.1 Hz
UMains	235 V
IMains	0.8 A
<hr/>	
Udc	13.1 V
Udc ripple	0.1 V
Idc	-3 A
Ignose AC	0
aux. relay	0