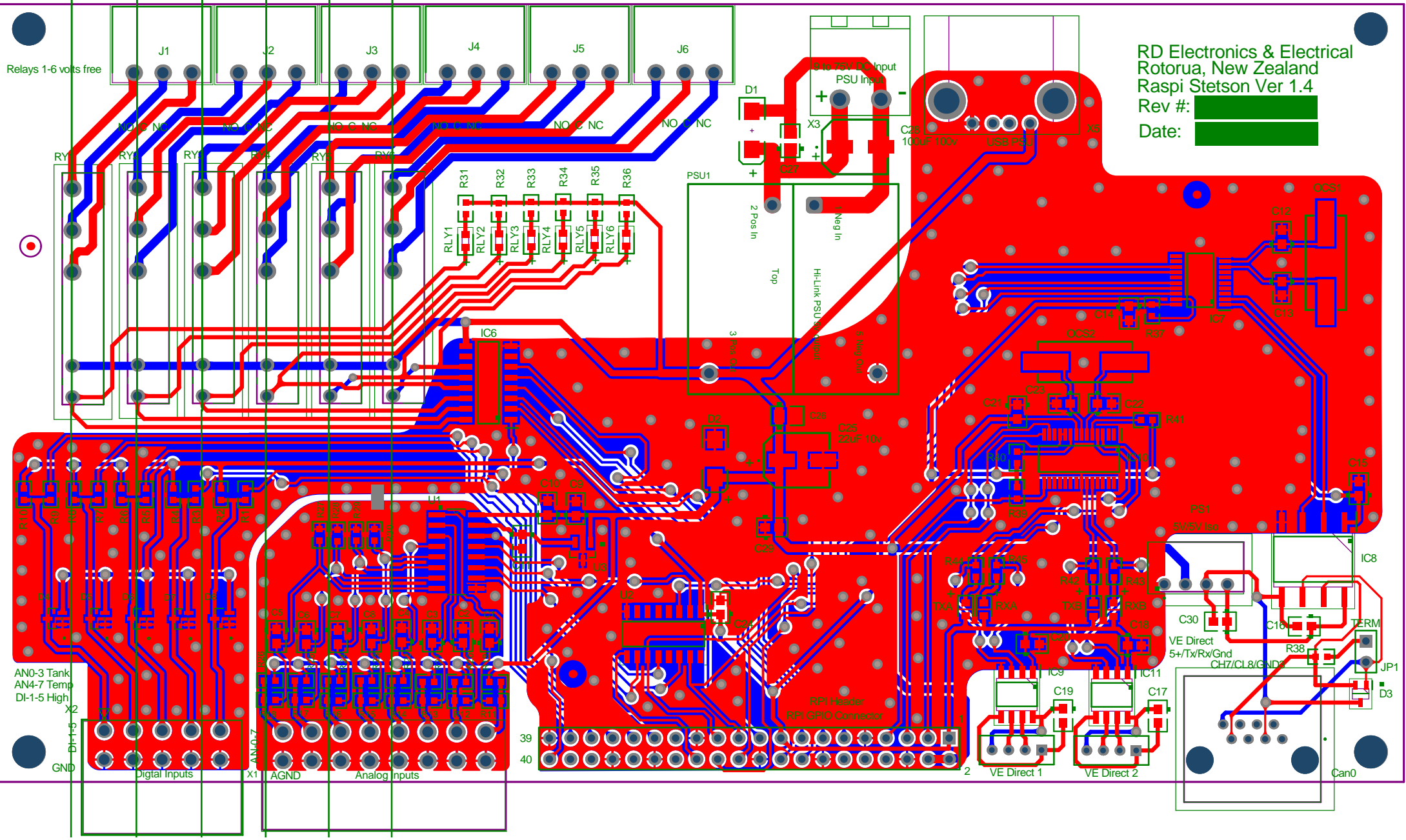


RD Electronics & Electrical
Rotorua, New Zealand
Raspi Stetson Ver 1.4
Rev #:
Date:



Relays 1-6 volts free

AN0-3 Tank
AN4-7 Temp
DI-1-5 High
GND

Digital Inputs

AGND Analog Inputs

8 to 75V DC Input
PSU Input

PSU1
2 Pos in
Top
5V Neg Out
Hi-Link PSU's Analog

USB PSU

PS1
5V/5V Iso
VE Direct
5+/Tx/Rx/Gnd
CH7/CL8/GND

RPI Header
RPI GPIO Connector

VE Direct 1
VE Direct 2

Can0

BOARD STACK REPORT