

RD Electronics & Electrical
Rotorua, New Zealand
Raspi Stetson Ver 1.4
Rev #:
Date:

Relays 1-6 volts free

AN0-3 Tank
AN4-7 Temp
DI-1-5 High
X2
GND
Digital Inputs

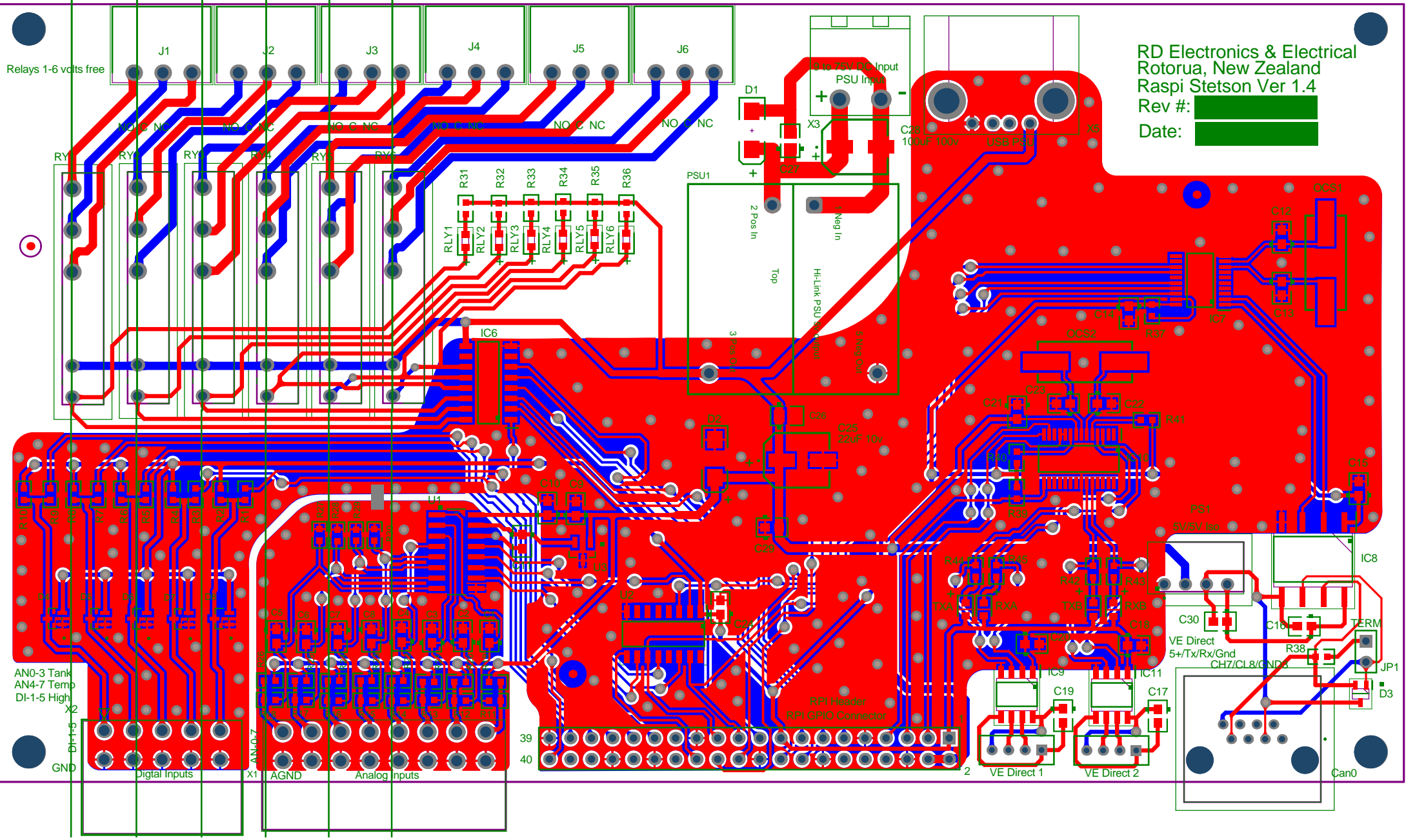
AN0-7
AGND
Analog Inputs

39
40
RPI Header
RPI GPIO Connector

VE Direct 1
VE Direct 2

VE Direct
5+/Tx/Rx/Gnd
CH7/CL8/GND5

Can0



BOARD STACK REPORT